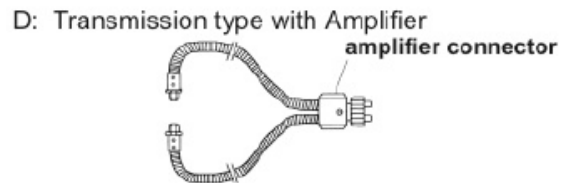
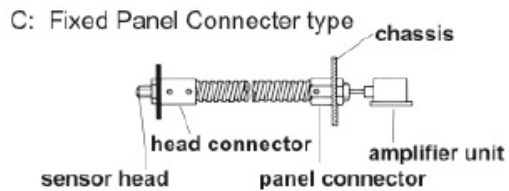
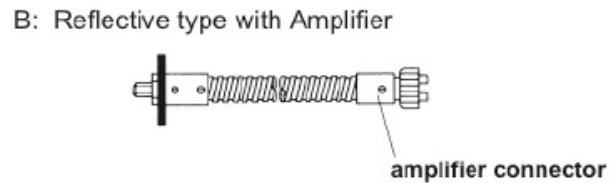
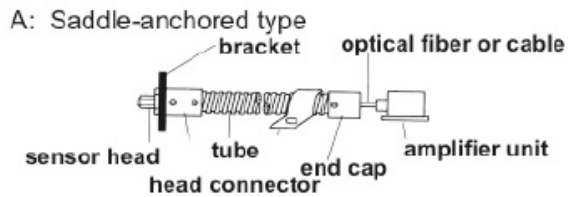


Assembly Guide



Select your End Fitting Type:

Screw-type benefits:

- Easy to screw on and off as needed
- Suitable for high temperature applications

Adhesion-type benefits:

- Outer diameter of connector is small
- Vibration resistant
- Economical

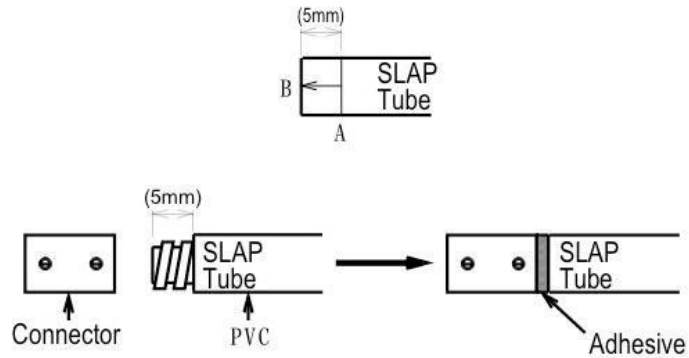
End Fitting Selection Guide:

1. Choose between the screw or adhesive-type connector.
2. Select the head connector according to configuration of sensor unit (screw size x pitch, cylindrical outer diameter) and the outer diameter of the optical fiber or cable.
3. Refer to the appropriate instruction example and pick the terminal fitting.
4. Choose tube. Select a tube with an inner diameter larger than fiber/cable diameter. Less than 60% of the cross section is recommended.

Assembly by Users:

DIAGRAM 1

Stripping PVC from Tube & Attaching Connector



- Order your Tubes and End Fittings separately. (Orders must meet minimum order requirements.)

Screw-Type Assemblies:

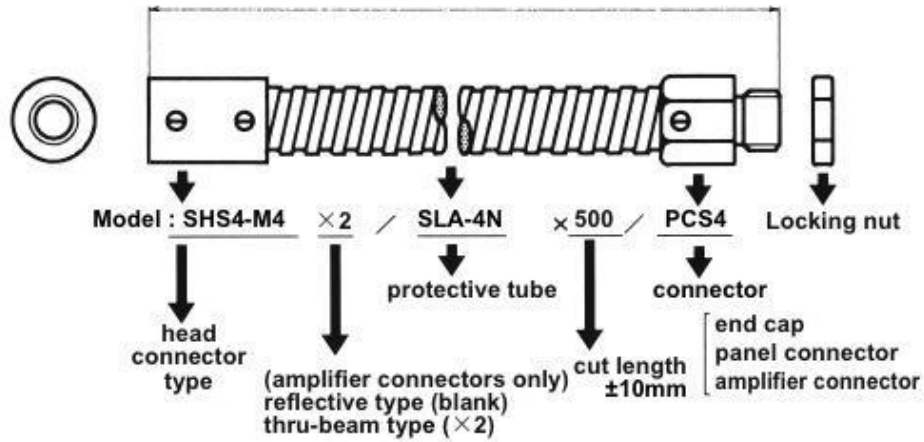
1. Using a knife, cut PVC 5mm (A) from the edge of the tube.
2. Slit tube, starting at (A) and ending at (B). (View Diagram 1)
3. Peel off the PVC from the tube termination.
4. Screw the end fitting on to the tube.
5. Adhesive can be added between the tube and the screw end fitting for enhanced strength.

Adhesion-Type Assemblies:

1. Apply adhesive. (We recommend High Super 5)
2. Adhesive should be applied at room temperature.
3. Heat tolerance will be -40 to +100 degrees Celsius on the finished product.
4. Using a knife, cut PVC 5mm (A) from the edge of the tube.
5. Slit tube, starting at (A) and ending at (B). (View Diagram 1)
6. Peel off the PVC from the tube termination.
7. Glue with the end fitting on to the tube.

Assembly by our Factory:

DIAGRAM 2



Pre-assembled conduits with the proper connectors & inserts already affixed to the Hagitec conduits or tubes are available for order.

Standard Ordering Code:

(Type A) + (Optional B) / (Type C) x (Length D) / (Type E)

- A = End Fitting type A
- B = "X 2" for transmission-type, 'empty' for all others
- C = Conduit type
- D = Cut length (mm)
- E = Connector type B